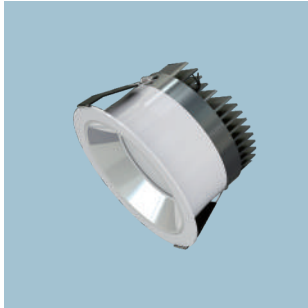


# GALAXY Series LED DOWNLIGHT

LED Downlight System

## GALAXY Series SPECIFICATION



### Feature

- Medium size with cutout 150mm
- Perfect choice for hotel lighting and hospitality area
- Thanks to its zhaga concept designs, G6R owns high flexibility in change of reflector and LED, we can change different accessory for various application to suit your custom project requirements
- Clear glass version makes the LED light source deep recessed, which provides very low glare light.
- High grade diffuser provides uniform light as well as greatly illuminates environment
- 3 year warranty

### Temperature

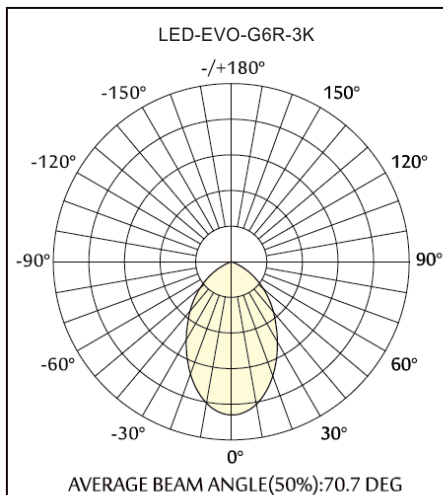
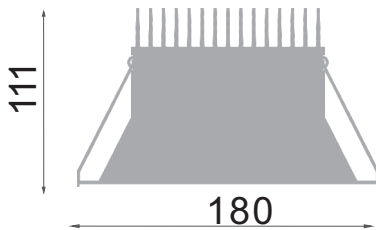
- Ambient operating temperature: -20°C~+40°C
- Storage temperature: -30°C~+60°C

### G6R

Product Code	Downlight output	LED Power	System Power	CRI	CCT	LED Brand
LED-EVO-G6R-3K	2100 lm	26 W	30 W	83	3000K	CITIZEN
LED-EVO-G6R-4K	2200 lm	26 W	30 W	83	4000K	CITIZEN

LED: CITIZEN COB  
 ■ 26W ( 2500 Lm )

HEATSINK : Die-cast aluminium, powder-coated  
 HOUSING : Aluminium, power-coated or anodized  
 REFLECTOR : Pure aluminium ,  
                   □ Mirror -finish   ■ Matt-finish   ▨ Black baffle  
 DIFFUSER : High grade DEGUSA PMMA  
 LED COLOR : ■ 3000K   ■ 4000K



Light output ratio	
LOR	100 %
ULOR	0 %
DLOR	100 %
FFR	0.00 (0:100)
BLF	1.00

LUMINANCE cd/(m²)		
G(DEG)	C0/180	C90/270
85	116	80
80	110	104
75	739	316
70	3094	2387
65	8101	7777
60	13378	13618
55	17768	17917
50	21632	21690

Room Reflectance		Utilization Factors									
Ceiling	Walls	Floor	Room Index								
0.80	1.00	1.25	1.50	2.00	2.50	3.00	4.00	5.00			
70	50	20	70	78	85	89	95	99	101	105	107

SHR Nom = 1.00 SHR Max = 1.05  
 According to DIN EN 13032-2 2004

